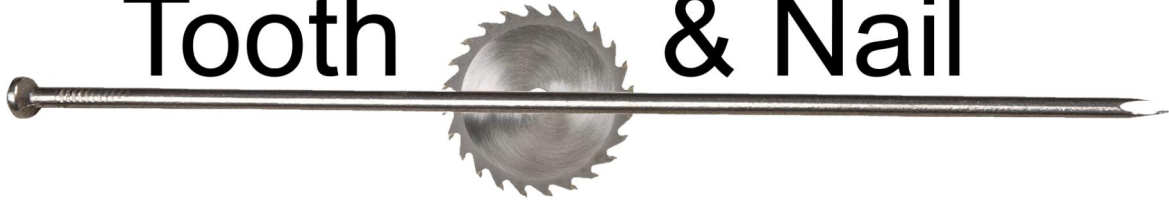
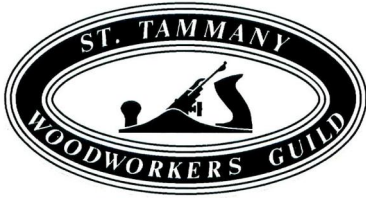


Tooth & Nail



Newsletter of the St Tammany Woodworkers Guild Aug 2016



OFFICERS

President:

Bob Busfield
rabusfield@hotmail.com

Vice President:

Brian Harrell
bharr151@bellsouth.net

Secretary:

Patricia Robbert
pat_robber@yahoo.com

Treasurer:

Wayne Thompson
bjwthompson@bellsouth.net

Wooden Boat Show Coordinator:

Henry Simon
topsw@bellsouth.net

Librarian:

Jim Suarez
svpanoya@gmail.com

The June meeting was held at Brian Harrell's shop. Brian gave a very comprehensive lesson on the use of a router.

Our new website is looking good and has already done its job of letting some prospective new members learn about our organization. Welcome to Bob Lanza and Cody Chenevert, and Jason Thompson who attended the meeting. We also learned that Cody and Jason, years ago, enjoyed building boats at our booth. The website is www.StTammanyWoodworkersGuild.com. If you have any

comments or suggestions for the site, please let Tom Gustafson know.

Jim Suarez is maintaining our lending library and will bring books and DVDs to a meeting upon your email request. A complete list of the library holdings can be found on our website. Jim's email address is svpanoya@gmail.com.

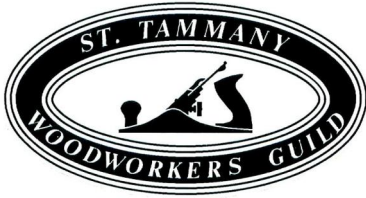
The next meeting will be the fourth Tuesday in August, the 23rd, at the St. Joseph Abbey Woodshop.

-Pat



www.StTammanyWoodworkersGuild.com

Website Manager: Tom Gustafson, tom@gustafson.us



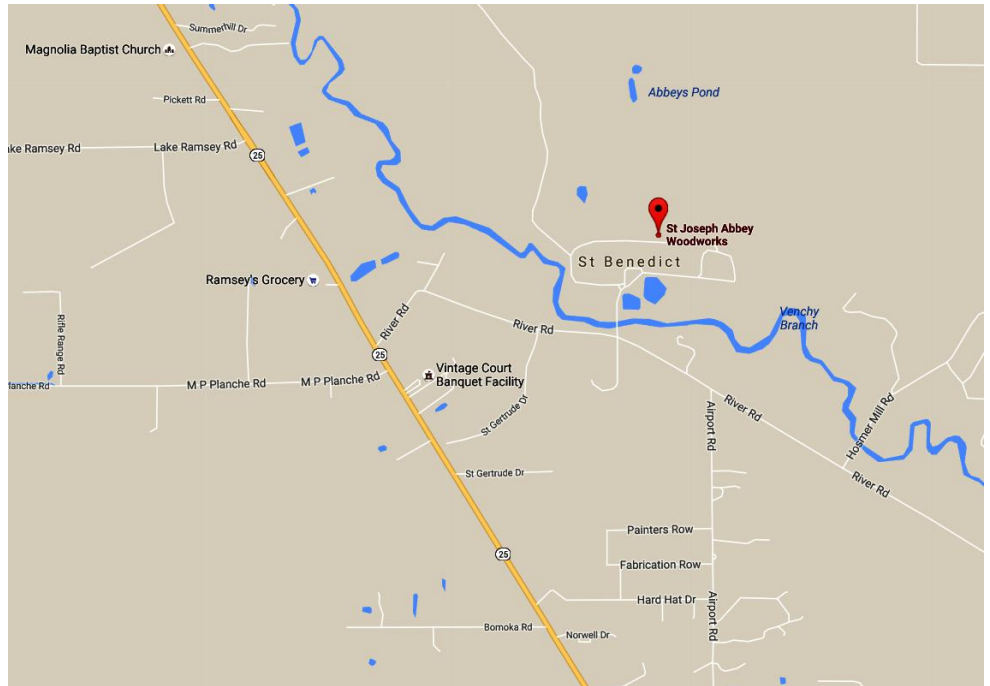
MAP TO ST. JOSEPH ABBEY WOODSHOP

NEXT MEETING

Tuesday
Aug 23, 2016
7:00 PM
Agenda:
Set-up of a Table Saw

St. Joseph Abbey
75476 River Rd
Covington, LA 70457

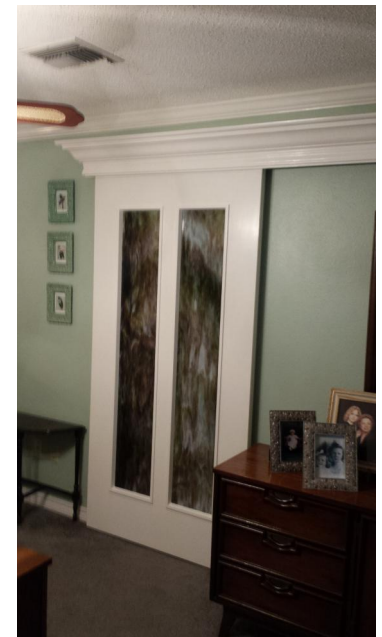
Directions from Covington:
Take US-190 W to junction
of 190 and LA 25.
Continue onto LA 25 north
for 1.9 mi.
Turn right onto River Rd
for 0.7 mi.
The Abbey entrance will
be on the left.
Cross the single lane
bridge to enter the Abbey.
Turn right, go past the
church, turn left.
Woodshop is in the
second block on left.

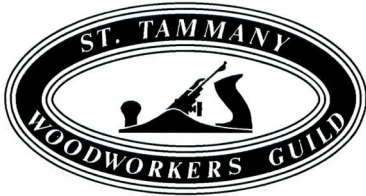


JUNE MEETING



John Laurencis hung a 42" wide door in his home using aluminum barn door hardware. The glasswork is from Dependable Glass; millwork from Acadian Millworks.





MISSION

The Guild is an organization founded in 1991 by local woodworkers for the purpose of education and inspiration in the art of woodcraft. The Guild is open to anyone who has an interest in woodworking at any skill level. Most members live in St. Tammany Parish but some come from Washinton Parish and Orleans Parish. Meetings are on the fourth Tuesday of each month at 7:00 PM except July when there is no meeting and November and December when the meetings are on the third Tuesday.

No matter what your level of experience is in the field of woodworking or where your interests lie, e.g., woodturning, flatwork, or carving, the Guild is there for your enjoyment and fellowship. Regardless of how many tools you own, whether you have a shop or not, come and see what the Guild is all about.



Brian Harrell made a dining table and bench out of maple for a neighbor, stained it espresso, and used Domino tenons for joinery.

Tom Gustafson shows a blade from a SawStop table saw after the aluminum brake has exploded and imbedded itself into the blade. Ruins the blade but saves fingers!

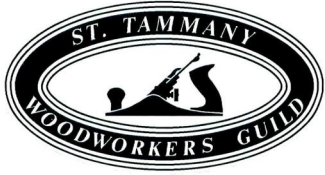


Pat Robbert made a side table from a slab of maple. She cut the tapered legs using an L-jig on the table saw. The bevel on the top was made with a jack rabbet plane.

Mel Borne shows a shrimp boat. The children would love to make this.



Brian Harrell shows a tapering jig for the table saw.



LENDING LIBRARY

Please contact our librarian by email to request a book or DVD. Jim will bring it to you at the next meeting. Some of the titles follow and a complete list is on the website.

Building Fine Furniture,
David Thiel's Power Tool Maintenance,
The Table Saw Book,
Art of Wood Inlay,
Learn to Turn,
Band Saw Fundamentals,
Small Furniture,
Table Saw Techniques,
Working in Wood,
Scrollsaw Techniques,
Woodturning for Cabinetmakers,
Precision Trim Cabinetry,
Complete Manual of Woodworking,
110 Easy Projects,
Blizzard's Book of Woodworking,
Bandsaw Boxes,
Bookcases,
Multi-center Woodturning,
American Lighthouses.



Jack Terry tested several rust removal and prevention options. Crystal kitty litter can be used as a desiccant where tools are stored. Evapo-Rust rust uses chelation to remove rust. ChemPrime converts rust to a rust inhibitor.

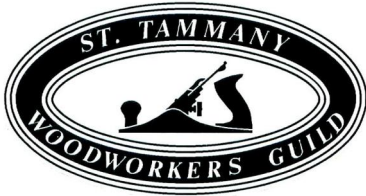


John Laurencis built a small parts jig for use on the table saw. The plans are available from www.woodsmithplans.com and the jig was seen in the Apr/May 2015 issue of Woodsmith.



Brian Harrell presents a workshop on routers. Bits have 1/4" or 1/2" shanks and come in high speed steel and carbide tipped versions. Large diameter bits require a slower router speed.





Fences can be fancy or a simple piece of wood.

Trim routers are convenient for light hand-held work and will accept bits with a 1/4" shank. Full-size routers come as plunge routers, fixed-base routers, or bare motor routers for installing in a lift. Full-size routers have collets that take 1/2" bits and adapters for 1/4" bits. Tables can hold a router in a vertical or a horizontal position. Standard brass bars of various dimensions are useful for setting bit height. A hand-held router is moved counter-clockwise around the outside of the material and clockwise for the inside cut. A brass template set is used for pattern routing. A shelf jig. A fluting jig. A storage drawer for router bits.

Safety in the use of a router involves using eye, ear, and lung protection. Fingers must be kept away from the rapidly spinning bit. Fences, finger boards, and push sticks, as well as hand pressure, keep the work piece secure.

